



SINGLE JET FLOW METER – CLASS B

Compact design for most metering applications. Supplied with nuts, tails and washers. See Below for pulse output options.

	Model	Size	Nominal flow rates m3/hr	Length mm	Price £
	(COLD WATER) SUPER DRY DIAL. Frost resistance Design.	1/2"	1.5	110	31.40
		3/4"	2.5	130	40.70
	(HOT WATER 90° C) SUPER DRY DIAL	1/2"	1.5	110	40.21
		3/4"	2.5	130	46.91
	Pulse Output Option :	10 Litres = 1 Pulse			30.00


MULTI - JET FLOW METER – CLASS B

Compact design for most metering applications. Supplied with nuts, tails and washers. See Below for pulse output options.

	Model	Size	Nominal flow rates m3/hr	Length mm	Price £
	COLD WATER SUPER DRY DIAL	1/2"	1.5	145	54.78
		3/4"	2.5	190	62.67
		1"	3.5	260	87.00
		1 1/4"	6	260	99.35
		1 1/2"	10	300	185.00
		2"	15	300	260.00
		2"	15	300 Flanged	185.00
Pulse Output Option :	1,10,100,1000 Litres = 1 Pulse (1 litre = 1 Pulse 1/2 - 1 1/4" only			50.00	

SINGLE JET FLOW METER – CLASS B


Compact design for most metering applications. Supplied with nuts, tails and washers. See Below for pulse output options.

	Model	Size	Nominal flow rates m3/hr	Length mm	Price £
	(HOT WATER TO 90°C) SUPER DRY DIAL	1/2"	1.5	165	106.00
		3/4"	2.5	190	111.00
		1"	3.5	260	155.00
		1 1/4"	6	260	165.00
		1 1/2"	10	300	240.00
Pulse Output Option :	10,100,1000 Litres = 1 Pulse. (10 Litres = 1 Pulse 1/2" – 1 1/4"			50.00	

Visit our website @ www.maddisonwatertech.co.uk


IRRIGATION & AGRICULTURAL WATER METER

(With interchangeable mechanism) see below for Pulse Output options.)

	Model	Size	Nominal flow rates m3/hr	Length mm	Price £
	ARAD MODEL WMR	2"	20	200	205.00
	Pulse output option : 100 Litre = 1 Pulse				65.00


WOLTMANN TYPE WATER METER

(With interchangeable mechanism) see below for Pulse Output options)


	Model	Size	Nominal flow rates m3/hr	Length mm	Price £
	TURBINE METER Cold Water SUPER DRY DIAL CLASS B PN16 Flanged (Add 10% PN10 or ANSI 150)	2"	15	200	265.00
		2 1/2"	25	200	290.00
		3"	40	225	350.00
		4"	60	250	410.00
		5"	90	250	460.00
		6"	150	300	615.00
		8"	250	350	664.00
		10"	400	450	910.00
12"	600	500	2166.00		
Pulse output option : 100,1000,10,000 Litres = 1 Pulse				50.00	


WOLTMANN TYPE WATER METER (90° C HOT)

(With Interchangeable mechanism) see below for Pulse Output Options)

	Model	Size	Nominal flow rates m3/hr	Length mm	Price £
	Helix Meter HOT WATER (90° C) SUPER DRY DIAL CLASS B PN16 Flanged (Add 10% PN10 or ANSI 150)	2"	15	200	548.00
		2 1/2"	25	200	561.00
		3"	40	225	658.00
		4"	60	250	736.00
		5"	90	250	936.00
		6"	150	300	1093.00
		8"	250	350	1343.00
Pulse Output option : 100, 1000, 10,000 litres = 1 Pulse				50.00	

Visit our website @ www.maddisonwatertech.co.uk

IRRIGATION WATER METER (For dirty, muddy or sandy water (see below for Pulse Output Options)						
	Model	Size	Nominal flow rates m3/hr	Length mm	Meter ONLY £	Flanged BAUER Coupling Set £
	Paddle Wheel COLD WATER SUPER DRY DIAL CLASS A PN16 flanged. With Bauer coupling sets optional.	2"	35	200	250.00	55.00
		3"	75	225	270.00	95.00
		4"	125	250	305.00	121.00
		6"	250	300	375.00	208.00
		8"	450	360	550.00	375.00
		10"	600	450	1210.00	N/A
		12"	800	510	1573.00	N/A
Pulse output option: 100,1000,1000 litres = 1 pulse						50.00

IRRIGATION WATER METER HEADS ONLY C/W TEST CERTIFICATE				
	Model	Size	Nominal flow rates m3/hr	Meter Head ONLY £
	IRT ARAD	3"	75	148.00
		4"	125	182.50
		6"	250	247.44

WE ALSO OFFER RECALIBRATION SERVICE ON ALL MAKES OF METERS.

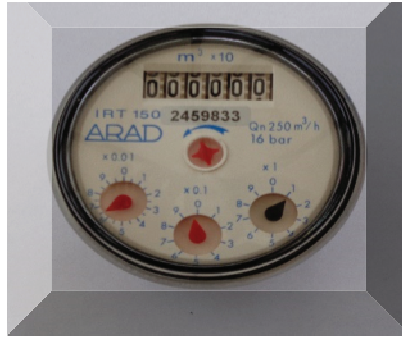
Also available a comprehensive range of MAG Meters, Controllers and Digital Counters.

Price on Application



Visit our website @ www.maddisonwatertech.co.uk

WATER METER DIAL CALCULATIONS



Dial	For reading in M3 multiply by:	For reading in litres multiply by:	One full dial revolution represents
X 10m3	10	10,000	100m3 or 100,000 ltrs
X 1m3	1	1,000	10m3 or 10,000 ltrs
X 0.1m3	0.1	100	1m3 or 1,000 ltrs
X 0.01m3	0.01	10	0.1m3 or 100 ltrs
X 0.001m3	0.001	1	0.01m3 or 10 ltrs

Example of taking a reading using the above dial for illustration.

Calculation : Current dial reading x dial multiple (in m3 or litres)

Dial	Dial reading	Calculation for reading in m3	Calculation for reading in litres
X 10m3	54	$54 \times 10 = 540\text{m}^3$	$54 \times 10,000 = 540 \text{ litres}$
X 1m3	5	$5 \times 1 = 5\text{m}^3$	$5 \times 1,000 = 5,000 \text{ litres}$
X 0.1m3	7	$7 \times 0.1 = 0.7\text{m}^3$	$7 \times 100 = 700 \text{ litres}$
X 0.01m3	1	$1 \times 0.01 = 0.01\text{m}^3$	$1 \times 10 = 10 \text{ litres}$
TOTAL		545.71	545,710 litres

Example of setting flow rate using the above dial for illustration.

Calculation : Required litres per minute / dial revolution in litres.

Number of dial revolutions per minute required.

Dial	Flow rate @ 80m3/h (1333 l/min)	Flow rate @ 250m3/h (4166 l/min)	Flow rate @ 450 m3h (7500 l/min)
X 0.1m3	$1333/1000 = 1.3$	$4166/1000 = 4.2$	$7500 / 1000 = 7.5$
X 0.01m3	$1333/100 = 13.3$	$4166/100 = 41.6$	$7500 / 100 = 75$